

Walk around the Maria

59 Maria Creek

Starting at Charles Street entrance. The Maria Creek was named after the Brigantine "Maria" that was wrecked near here in 1840 with all lives on board lost. The late Len Lampit started the earlier development of this area, his hope for the future was to make it a haven for birds. Over to the left are the groyne's which are being constructed for an all weather boat ramp. The walking track which winds its way along the creek was constructed in 1998 by the Lacepede District Council.

60 Dudley Bridge

Under the new footbridge (opened in 2002) constructed by Council, Graham Usher and volunteers you see the remains of the old screw pile bridge which was known as the Dudley Bridge built in 1863 for vehicular traffic. This was one of many bridges built over the Maria Creek. Cross over the bridge to follow the new walking track around to the Family Tree Park, Sundial and Apex Park (OR)

61 Maria Creek Footbridge

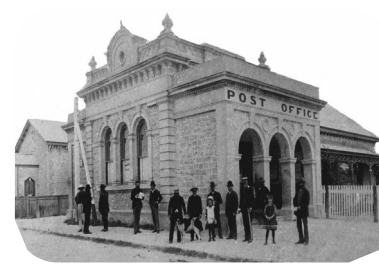
Keep walking until you come to Apex Park. In the 1980's Apex members carted many tons of rocks and cemented the banks of the creek to give us this lovely picnic spot. The playground was another Apex project. Graham Usher constructed the foot bridge over the creek in 1995. Children from Rosetown now cross over the bridge and meet up with the bicycle track to ride to school instead of crossing on the Highway.

62 Apex Park

Water Sculpture in Apex Park is a contemplative piece featuring the image of a large fish which appears and disappears at intervals, as the cascading water paints it in and out. Cairn celebrating the International Year of the Volunteer, Centenary of Federation and recognizing 70 years of Apex.

Have lunch or just relax in the park while the children play. For the energetic head off on some of the other walks that start near here.

INTERESTING WALKS



**FIVE SELF-GUIDED
WALKS TO
DISCOVER SOME OF
KINGSTON'S
HISTORY**

KINGSTON SE

Brief History of Kingston SE

Kingston was founded in 1851 as a private town by George Strickland Kingston. It is situated on Lacedepe Bay which was named after the naturalist Bernard Lacedepe in 1802. At first Kingston was a rough and tumble settlement with a population made up of aborigines and about 140 white people.

The Cooke brothers, Archibald and James were more involved with the town's development as they wanted a safe port from which to ship their wool directly to England. Although they had properties at Wellington and Cookes Plains, they bought land around the low-lying Maria Creek and grazing land around Lacedepe Bay.

In 1865 the S.A. Government proclaimed Port Caroline as a safe harbour for wheat and wool ships, Lacedepe Bay being the outlet closest to the agricultural land around Naracoorte. The town started to grow and by the early 1870's it was thriving with hotels, banks etc.

At this time there were really two towns, one built by the government along the coast and centred on the Post Office & Police Station. A private town called Rosetown grew up on the sand dunes beside the Maria Creek.

The town today has a population of about 2000 with the main industries being fishing, farming and viticulture.

56 Coopers Lane

Continue along McFarlane Street till you come to Coopers Lane and turn right into the lane, named after the Cooper family who lived there. The families would bring in their cows from the common (where the airport is now) and leave them in the backyards overnight ready for milking in the morning. There were windmills in every yard as that was the only way to have water for the animals. Horses were also kept in the yards as this was the only means of transport.

57 Cameron Street

Stroll along the lane, then turn left into Fergusson Street till you reach Cameron Street. Turning left into Cameron Street you see some of the early homes of which No. 8 was built for a doctor. Years ago an olive grove was planted along side of this home. The Settlers house at No. 10 originally had only two rooms. Across the road is the St. John's Lutheran Church built in 1964 by the late Alex Rasmus.



The walking track taken for the Walk around the Maria Creek

50 Old and New Council Chambers

51

Next to the Rose Garden is the Old Council Chambers which were built in the 1800's by J.J. Jarman, local builder and also a councillor for 18 years. This building has had many uses over the years as a meeting place for the C.W.A., R.S.L., Camera Club. It was the headquarters for the Lacepede & Tatiara Vermin & Plant Control Board until they moved in 2001 to new premises in the Industrial Estate. On the corner of James & Holland Streets are the new Council Chambers built in 1978.

52 Bowling Club

Keep walking along James Street until you come to the Bowling Club. In 1949 the land for this complex was donated by Mr. Charlie Barnett and is called Barnett Park in his memory. Turn left down Randall Lane to the Senior Citizens' Clubrooms which were built in 1981, with the land being donated by the Randall Family.

53 Anglican Church

You are now back on Agnes Street, turn left and walk up the hill towards the Anglican Church built in 1873. Stop by and view the lovely lead light windows. The house nestled beside the church was used for some years as the temporary hospital until in 1949 the Kingston Soldiers' Memorial Hospital was built.

54 Old Blacksmiths Shop

On the corner of Agnes and Holland Streets you come to an old home, which many years ago was the blacksmith shop and later was the home of Mrs. Jacobs the town midwife. Turning right down Holland Street is the Uniting Church which was built in 1887.

55 Old School Building

Turn right at McFarlane Street and a short distance on is the Buffalo Lodge Hall which was once used by the Salvation Army for barracks and Oddfellow's Lodge. This building, now privately owned is being restored. Cross over the road and head back towards Holland Street. The old building on the corner was the former Kingston Area School built in 1880 and is now used as a Christian Centre.



1 Apex Park Reserve

The walk begins at the Apex Park Maria Creek Reserve. The monument is a 6ft high blue-grey Karataphyre quartz rock, weighing approximately five tons and quarried from natural outcrops on the Keilira property of the late Mr. Peter Vandeeper. It is a memorial to the ill-fated passengers and crew of the Brigantine 'Maria' which was wrecked off Cape Jaffa in 1840. The Maria Creek takes its name from this tragedy.

2 Ethel Watson Monument

Close by is the monument to Ethel Watson who was laid to rest on July 5th 1954 in the Kingston Cemetery. Locally known as Queen Ethel and a member of the Muandik Tribe she was the last full blood Aboriginal to reside in the Kingston District, where her descendants now live. She passed away in her 80th year.

3 Plaque in Memory of Malcolm Cameron

The third plaque is in memory of Mr. Malcolm Cameron, a bullock driver who died in 1941. There were sixty bullock teams working throughout the Kingston district in the early days and they were known to have grazed in this area on small 2 to 5 acre lots. Malcolm Cameron was known to have gone ploughing with his team the day before he died at the age of 83.

4 Analematic Sundial

The Analematic Sundial in the Sculpture Park was erected as a Bicentennial Community project by the Kingston branch of the Arts Council of South Australia. It was designed and crafted by Adelaide sculptor, Silvio Apponyi with a great deal of support and involvement from local groups and individuals. Silvio used granite selected from outcrops 18km north of Kingston. A pamphlet 'Sundial of Human Involvement' describes the sundial in detail.

5 Foot Bridge

The foot bridge was built in 1995 by Graham Usher for the community. Many years ago there was a bridge downstream which the people from Rosetown used but this was demolished when it became unsafe. The new bridge saves towns people from the danger of using the road bridge.





6 Family Tree Park

Walking along Watson Street, named for the gracious lady, Queen Ethel we reach the Family Tree Park. This was established as a Community Sesquicentenary Project in 1985. The late Mr. Ron Sly was the instigator of the project. The bronze plaques commemorate local pioneers and families of this area.



7 Rose Cottage

Continue walking along Watson Street then turn right into Britton Street which was named after a doctor who lived in Kingston in the late 1800's. Turning right again into Clarke Street at No 13 you will find Rose Cottage which was built in the 1880's and was extensively renovated and extended during the 1980's.



8 Dowdy Street

Returning to Britton Street, turn right and walk along there until you come to Dowdy Street then turn right again. This will now take you back to the Princes Highway. Dowdy Street was named after Robert Dowdy another local bullock driver, who later in life turned his attention to horses. He carted sleepers for the railway line from Naracoorte to Kingston. At that time there were only six families living in Rosetown.



9 Big Lobster

On reaching the Princes Highway you see the Big Lobster (Larry the Lobster), built in 1979. He signifies the value of the lobster fishing industry in the area.



10 Kev's Kollection

Next to 'Larry' is Kev's Kollection, a private tractor collection owned by Mr. Kevin Geue. The collection of over 100 tractors, stationary engines and other interesting memorabilia was unveiled in 1997 and is open to the public.



11 Old Cottage on Adelaide Road

Opposite 'Larry' at No.11 Adelaide Road is a small stone cottage built in the late 1800's by the early settlers. This was home to Miss Janet Watson for many years. The present owners are presently restoring the cottage.

45 Old Butcher Shop

Across the road you see a little single fronted shop, which was built in 1934 and used as a butcher shop owned by Mr. Stewart Doyle. After the new butcher shop was built next door the old shop had many uses as a shoe store, hairdressing salon and florist. In 1978 the Kingston Community School renovated the shop and it was the location of the Wood Hut Craft shop. This was a Community School project, staffed by volunteers to raise funds to benefit the school and community. The Wood Hut closed its doors June 2000. In 2009 this shop was converted and currently trades as "Asian Inspirations".

46 RSL Hall

Continue walking along Charles Street until you come to James Street. Turning left you come to the R.S.L. Hall. The house was purchased in 1950 and converted into a meeting place which is also used by the Red Cross and Kingston Lions Club for their meetings.

47 Coach Station

Across the road is a small house which was a coach station in the late 1800's where the mail coaches changed horses. Down the back you can see where the horse stables were.

48 RSL Monument & Rose Garden

Crossing over Cameron Street you come to Memorial Park where the R.S.L. Monument and Rose Garden are to be found. The railway line from Naracoorte to Kingston ran through here on its way to the port.

49 Station Masters Residence

Looking across the road you see the house which was the Station Masters residence. The railway station was behind this building but many years ago the solid old stone building was demolished. When the town traffic increased it became dangerous having the railway station here so it was shifted to the eastern side of town. Next door is the former C.W.A. hall built in 1952, which has now been renovated to become a private residence.



Walk Around Kingston

39 Kingston District Hall, Agnes St

The side section of this building with the glass panel window, was the town library for many years until the library was shifted to the Kingston Community School in 1985. The Kingston District Hall was built in 1938.

40 War Memorial Park

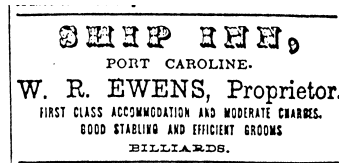
From the Kingston District Hall turn right and walking along Agnes Street you come to the War Memorial Park. Over the years June Stompe with other dedicated volunteers have made this into a lovely garden. Over the road is Carolyn Court a small group of shops for you to browse.

41 LeCornu's Garage

The next place of interest is LeCornu's garage, one of the original buildings of the town. It was a general store and postal agency until the new post office was completed in 1869. Mr. Paterson owned the shop and he later sold it to Edward Goode, a qualified chemist.

42 Crown Inn Hotel

The Crown Inn Hotel on the corner of Agnes and Charles Streets was originally known as the 'Ship Inn' which was first licensed in 1872.



43 Walters of Kingston

Turn left along Charles Street to Walters Men's Shop. These premises were opened in 1936. Mr. Ern Walters who was born in Kingston in the late 1800's owned the business and it has been handed down through the family.

44 Grandma's Pantry/Kingston Supported Employment Service

Next door is Grandma's Pantry. The organisation known as Kingston Supported Employment Service was set up in 1990 to provide long term quality support and employment to all the people in Kingston and surrounding districts who have a disability. The shop is open from 9:30am until 3:30pm Tuesday to Friday. Grandma's Pantry have a shop in Agnes Street where you can stop browse around the crafts and delicious home made produce (jams, pickles, sauces, biscuits and much more).

East Terrace Walk

12 Paterson Lane

Starting at the Maria Creek Bridge walk along East Terrace till you come to Paterson Lane, this will take approximately 15 minutes. The lane was named after P.J. Paterson who was Chairman of Lacepede Council in 1880. The cottages in the lane were used by the men patrolling the railway line which has since been pulled up.

13 Gall Park

Keep walking along East Terrace until you come to the turn off into Gall Park. Named after Mr. John Gall who was Chairman of the District Council from 1892-1907. Follow this road to the Kingston Community School (built in 1983), the community library, TAFE learning centre, tennis courts, football oval and show grounds. Visit the library to see the magnificent lead light window and also the brass plaque in memory of the men who enlisted in 1918.

14 Cemetery

Back out onto East Terrace and if you are very energetic keep walking on towards the cemetery for here there are many graves of the early settlers. For the less energetic turn right at Young Street and visit Wirrildir Park, one of June Stompe and the late Ron Sly's projects.

15 Bert Baseley Memorial Park

Walking along Young Street takes you to the Bert Baseley Memorial Park. A monument was placed there in memory of Bert Baseley who worked hard for many people and projects in the town, especially for R.S.L., Legacy, the Lions Club and many other organisations.

16 Kingston Retirement Village & Barrowman Reserve

Continue along till you come to Fergusson Street and turning left wander down to the Kingston Retirement Village. On one side of the village is the Kingston Pony Club grounds and on the other Barrowman Reserve. All this land was donated by the late Mrs. Barrowman for those purposes.

17 Lighthouse Lodge

You can walk through Barrowman Park up to the Caravan Park or come back along Acraman Street walking past Lighthouse Lodge, an aged care facility which was opened in 1990.

Cooke Street Walk

18 Caravan Park

Start at the Kingston Caravan Park. With your back to the sea walk beside the caravan park to Cooke Street then turn right and a short distance along you come to OTTER HOUSE. Shaded by large pine trees, Otter House is a quiet memorial to James and Archibald Cooke, who were founders of Kingston. The house built in 1856, was named after Otter Ferry from Scotland. This eight roomed home has stone interior walls, solid cedar woodwork and over the last few years has been beautifully restored by its owners. The original slate roof has gone. Retrace your steps back to the Caravan Park corner, crossing over Promenade St. continue along Cooke St. to Vine Cottage.

19 67 Cooke St. Vine Cottage

Built about 1870 and was one of the earliest buildings in the town. The first resident minister, Reverend Milne lived there. The cottage was saved from demolition in the 1980's when a builder owned it. More alterations were made to it in the 1990's and on close inspection of the old stone-work you can see where the alterations have been made.

20 61 Cooke St. Goode's House

Mr. Edward Goode, originally from Goolwa settled in Kingston on his honeymoon. Trained as a chemist he also operated a general store and later became a successful landowner and pastoralist. The present owners have renovated the back of the house, but the general appearance is unchanged.

21 59 Cooke St

This small cottage was built by the Cooke brothers as a workman's home. The current owners are restoring and making additions to it.

22 45 Cooke St. Cane Cottage

This interesting little building is not all that old. Constructed in the late 1940's using stone from an old house at the rear of the block. It has had an interesting history as a bike shop, a cane and gift business, real estate agency and the premises for an interior design business.

23 35 Cooke St. The Old School

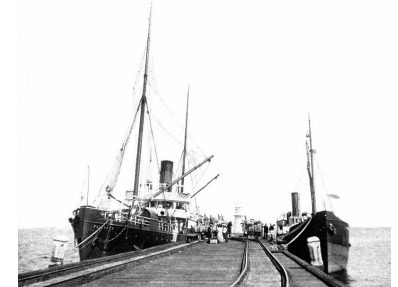
Built by the Cooke family because Mary Cooke was concerned about the lack of education in the early township. It is believed that a Mrs. George, a relative of the Cooke's operated the school.

35 13 Hanson St. The Harbour Master's House

In the western corner of what was the railway yard. The harbour master's job was to raise the flag on the flag pole, which was on the sea front to advise ships when they could come into port.

36 The Jetty

Built in 1863 and was ¾ mile long. Kingston soon became the major port on the south east coast of South Australia. The jetty is very popular in summer months for line fishing and for visitors to walk along, enjoying the evening seabreeze. From the jetty stroll along the walking track beside Len Lampit Reserve and enjoy the ocean views.



37 15, 16 & 17 Marine Parade. The Lighthouse Cottages

Built in 1933 when the staff on the lighthouse was reduced to 2 keepers and one man on shore. A change of keepers was made once a week. In 1974 the Education Department bought the houses when the light went automatic. The homes are now privately owned.

38 Marine Parade. The Lighthouse

This interesting landmark was originally sited out at sea on the Margaret Brock Reef near Cape Jaffa. When an automatic light was placed at Robe in 1974 the lighthouse was dismantled and re-sited in its present position. It was handed over to the National Trust in 1976.



Cape Jaffa
Lighthouse
on the Margaret
Brock Reef

28 Corner of Cooke & Hanson St. Old Bank Building

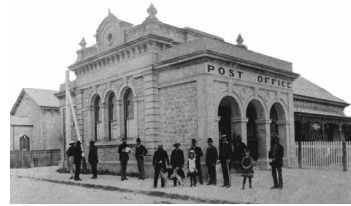
For many years this building was the Bank of Adelaide and later the Union Bank. In 1970 the building was sold and is now a private home.

29 1 Cooke St. The Old Police Station, Courthouse & Gaol

Built in 1864 and served as such until 1869. The police station continued in service until 1961 when a new building was constructed. It is now an antique shop, blacksmith's workshop and private residence.

30 1 Hanson St. The Post Office

Built in 1867 and was one of the original buildings in the town. Australia Post has restored it in great detail. This post office was one of only 5 selected nationally for a special Commonwealth stamp in 1982.



31 2 Hanson St. The Old Court House

Built by a local builder in 1869-70 with its high ceiling and unusual shaped doors and lovely windows. Unfortunately the building is no longer used.

32 Lions Park, Hanson St. The Engine House

Officially opened in 1988 and houses the 50 year old power engine which provided electricity to Kingston until 1974. The engine was shipped from England to 'Port Jackson' in 1946 and it logged over 100,000 hours while in service. Graham Usher built its new home.

33 Hanson St. The Royal Mail Hotel

A prominent feature in the town, first licensed in 1872 and has always been a family hotel. It was originally a stopping place for the mail coaches travelling between Adelaide and Port McDonnell.

34 Hanson St. This Old Wool Store

One of the original wool stores used when Kingston was a busy port. Railway lines across the road made it possible to move wool etc. in through the big arched doors. For many years Dalgety's had offices and merchandise there. After they purchased new premises, it was again used as a wool store, and is today a restaurant.



24 23 Cooke St. J.J. Jarman General Merchant & Goodwin Villa

J.J. Jarman opened his timber yard on this site in 1876 when he had the contract to build houses, sheds and railway station buildings on the Kingston to Naracoorte line. His home, which had a connecting door through to the store was named after his wife, a Miss Goodwin. The family also owned the 3 cottages adjacent. The old store is now owned by the National Trust and is the Pioneer Museum.

25 13 Cooke St. Backler's Store

The Backler family used this building as a grain and chaff store, later becoming a saddlery and then the general store and newsagency. In the 1930's the town's electricity supply was generated from the back of this building and known as Lacepede Light Company, later Lesco. In 1974 E.T.S.A purchased the company and the old engine which supplied the town with power is now housed in Lions Park. The property is now a private residence.

26 14 & 16 Cooke St

These two cottages are excellent examples of the homes built in the late 1800's. One is said to have been the Customs House office and the other a boatsman's cottage. Both cottages fell into disrepair, but the present owners have restored them close to their original style.

27 3 Cooke St. Old Bank of Adelaide

This old stone villa-fronted house was originally the Bank of Adelaide. From the front verandah there are 2 doors, one of which goes into the house the other was the entrance to the bank chamber and office.

Walk around Rosetown

(approximate time 25 minutes)
map numbers 1 to 11

East Terrace Walk

(approximate time 45 minutes)
map numbers 12 to 17

Cooke Street Walk

(approximate time 45 minutes)
map numbers 18 to 38

Walk around Kingston

(approximate time 60 minutes)
map numbers 39 to 58

Walk around the Maria Creek

(approximate time 30 minutes)
map numbers 59 to 63

